



TEREO

Network Video Surveillance

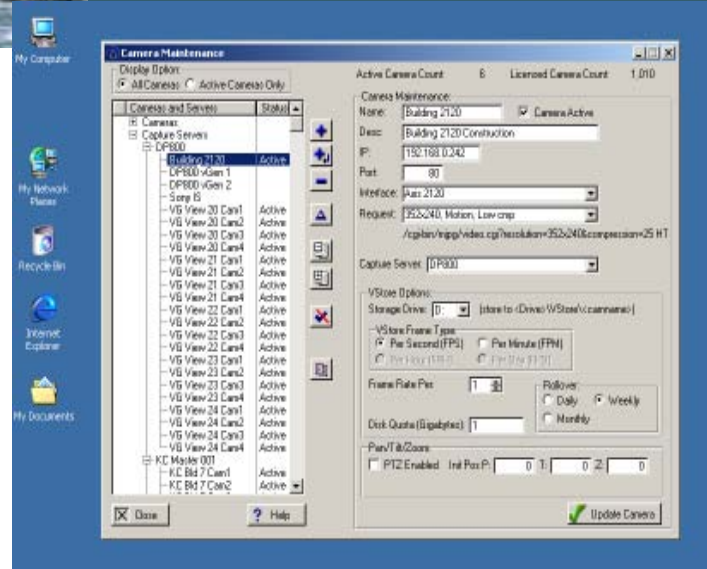
TEREO

for:

Windows 2000 Pro, Server, XP Pro

We have leveraged today's digital technology to create Tereo - a digital video surveillance application that can support very large CCTV and IP camera installations. Tereo is easy to learn and use, offering a digital solution to an analog world. Windows users will recognize Tereo's Windows-like

interfaces, which allows them to configure and use their solution effectively. Using Tereo technologies you can capture, store and playback camera images from a centralized location with digital image quality. Finally, Tereo offers world-class image capture and configuration tools, superb customization capabilities and scalability for your growing business.



Client/Server Architecture

Client/Server computing has become the industry standard for high availability digital video surveillance applications. Tereo incorporates thin client/server technology to add new capabilities and best of all, it's built in now! When you choose Tereo, you'll receive key benefits that only client/server architectures can provide, such as more efficient distributed processing, high performance, enhanced reliability, remote access and scalability for large numbers of users.

